



Structerm
Greener | Warmer | Stronger



External Wall Insulation & Render Systems

New Build Solutions

Hanson Structherm's range of External Wall Insulation (EWI) systems and solutions offer an effective method of creating smart, modern, thermally efficient, external façades for all types of new build projects.

Why choose External Wall Insulation from Hanson Structherm?

Almost half of the UK's CO₂ emissions come from homes and non domestic buildings. With challenging climate change targets now in place, the reduction of emissions from new buildings is one of the key challenges for industry and Government.

Hanson Structherm's EWI Systems address this challenge by offering a range of solutions which efficiently insulate the building envelope, reducing both heat loss and heating/cooling requirements and therefore CO₂ emissions. All systems can be designed to meet (or exceed) current Building Regulations and/or BREEAM/Code for Sustainable Homes targets, incorporating high thermal performance, excellent air tightness and eliminating cold bridges in walls.

The selection of Hanson Structherm EWI provides many key benefits, including:

- **Excellent thermal performance** - reduces demand for heating and cooling by helping to maintain a more consistent ambient temperature within the building
- **Fire performance** – systems are tested to latest BSI Standards and exceed those required by current Building Regulations
- **Superb air tightness** – Limits thermal bridging and unnecessary heat loss and achieves low air permeability of the building envelope
- **Environmentally friendly** – all systems are CFC and HCFC free and have zero Ozone Depletion Potential (ODP)
- **Suitable for both traditional and modern methods of construction (MMC)** – including masonry, timber, steel frame and concrete systems and equally suitable for low and high rise structures





Above: South Sefton Sixth Form College finished with Hanson Structherm's Thin Coat System





Colour Me Beautiful

For over 25 years, Hanson Structherm's External Wall Insulation systems have been specified on new build projects throughout the UK. Whether matching traditional façades in conservation areas, or creating crisp, clean lines and a seamless, modern finish, Hanson Structherm has a solution.

The range of options offers designers and architects the freedom to design buildings which are not only aesthetically pleasing, but which also meet the demand for high thermal performance required by current regulations.

Hanson Structherm's standard colours consists of a base range, which are available in acrylic or silicone finishes, giving the designer an excellent selection of colours and textures to choose from.

For those more demanding projects requiring complete flexibility in colour choice, we have a state of the art, in-house, tinting system which allows an infinite number of colours to be supplied in an acrylic finish. The technology used in the machine guarantees consistency of any hue produced.

We can also colour match to samples of material, including bricks.



High Performance, Contemporary Finishes

Hanson Structherm supplies a wide range of high quality renders and finishes. A comprehensive selection of aggregates, pigments and textures allows the designer freedom to create durable and attractive façades.

Hanson Structherm External Wall Insulation systems can be completed in a wide range of contemporary and traditional smooth or textured finishes.

Continuous research and development programmes ensure that the performance of each product consistently meets the most demanding conditions likely to be encountered with a particular building project.

Textured acrylic finishes offer excellent durability, water vapour permeability and water repellence. The silicone resin-based finishes retain their colour and cleanliness for longer and provide low maintenance protection to any project. Both silicone and acrylic finishes offer superb protection against UV and are crack resistant.

Dash finishes provide a functional and cost effective, two stage finish. Choose from our range of 20 standard shades of dash receiver and complement your selection with a choice of over 20 of the most popular natural mineral aggregates available.

Decorative finishes, such as marble aggregate are also available. Acrylic polymers in an aqueous emulsion are mixed with natural marble chips. With a choice of chip sizes and 30 standard colour combinations available, marble aggregate provides a refined aesthetic appearance with a grainy finish.

Anti-graffiti coatings are also available.

For more details regarding our range of finishes and effects, including application procedures and colour options, please see our Renders & Finishes Datasheets or contact Hanson Structherm's technical department on 01484 850098.



1 mm Stippled Texture



1.5 mm Stippled Texture



1.5 mm Dragged Texture



Dash Aggregate



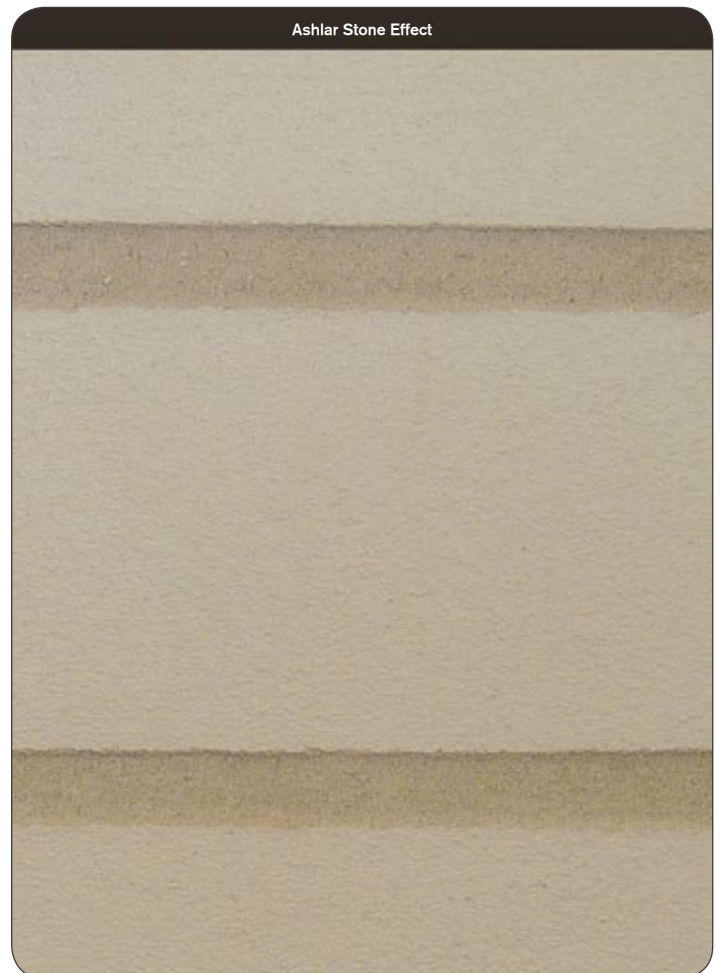
Marble Aggregate



Ashlar & Stone Effect Finishes

Hanson Structherm's range of Stone & Ashlar Effect finishes are highly versatile, two coat specialist render systems, providing the effect of real stone and ashlar stone by using differently coloured, render mortar and face layers.

The face layer is scribed to reveal the mortar layer before fully set. Available in 44 standard colours which can be used any combination desired. Depending on the final aesthetic result required, the face layer can be either smooth or traditional rustic style.



System Characteristics

Hanson Structherm's External Wall Insulation systems are based on a sequence of layers built up to form a thermally insulated, weatherproof and attractive envelope, suitable for a wide variety of building types.

External Wall Insulation Systems are made up of several layers of a CFC and HCFC free insulant, which provide thermal performance and aesthetic qualities.

Simply choose from our range of high performance insulation panels to meet your thermal requirements. These include expanded polystyrene (standard and thermally enhanced versions), extruded polystyrene, PIR and mineral fibre. Then select the most appropriate system and finish for your project using the System & Finishes Selector below.

Hanson Structherm's Thin Coat System uses a build up of flexible, acrylic base coat renders applied to the face of the insulation board. A reinforcing glass fibre mesh is bedded into the acrylic render, which is then smoothed to receive an acrylic or silicone decorative top coat. This system can be used in many market sectors, where a seamless finish is required.

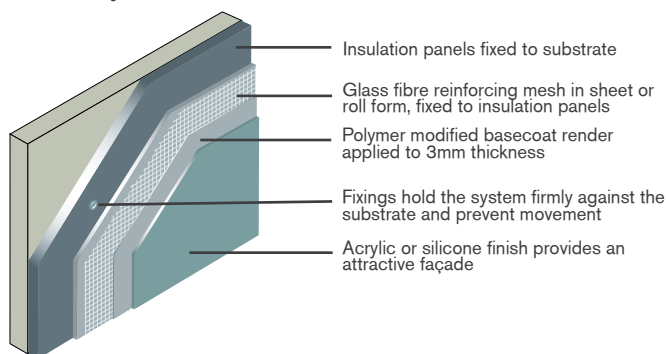
The High Build System uses a medium build up of cementitious render, with glass fibre mesh embedded within to create a finish ready to receive a variety of decorative finishes.

A Drained Cavity Solution is also available for projects utilising timber frame or lightweight cold rolled infill panels and requiring a drained cavity between the external wall insulation and the frame.

For more details regarding our range of systems, please see our **New Build External Wall Insulation Datasheets** or contact Hanson Structherm's technical department on 01484 850098.

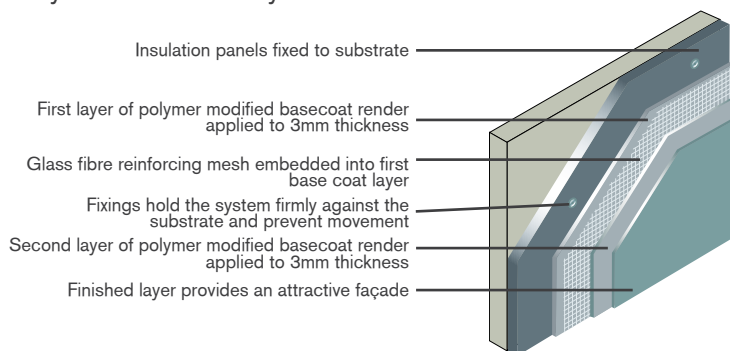
Thin Coat System

Incorporating a build up of acrylic based flexible base coat renders, embedded with a glass fibre mesh and through fixed, ready for an acrylic or silicone decorative finish.



High Build System

The High Build System uses a medium build up of cementitious render, with glass fibre mesh embedded within to create a finish ready to receive a variety of decorative finishes.



System & Finishes Selector						
System Type	Contemporary			Traditional		
	Acrylic	Marble Aggregate	Silicone	Stone Effect	Ashlar Effect	Dash Receiver /Aggregate
Thin Coat	✓	×	✓	×	×	×
High Build	✓	✓	✓	✓	✓	✓

Hanson Structherm has a comprehensive range of systems for all applications, including Refurbishment Solutions brochure for more details.

Exterior Render Systems

Hanson Structherm offers a range of render systems specifically for new build applications that are designed to allow walls to 'breathe' whilst providing superior water resistance.

The systems are available in both cementitious and silicone finishes. Both options provide a durable, highly resilient and aesthetically pleasing external envelope, which can be finished in a wide range of colours and finishes. In addition to the standard colour range and finishes available, simulated block work and ashlar detailing can also be created.

External render systems are suitable for application onto:

- Brickwork
- Block work
- Concrete substrate
- Sheathing board affixed to a timber or steel frame

Datasheets are available for Exterior Render Systems and should be referred to for further information.



Right & Below: ClassicPro Acrylic Medium Grain Render





Design & Technical Service

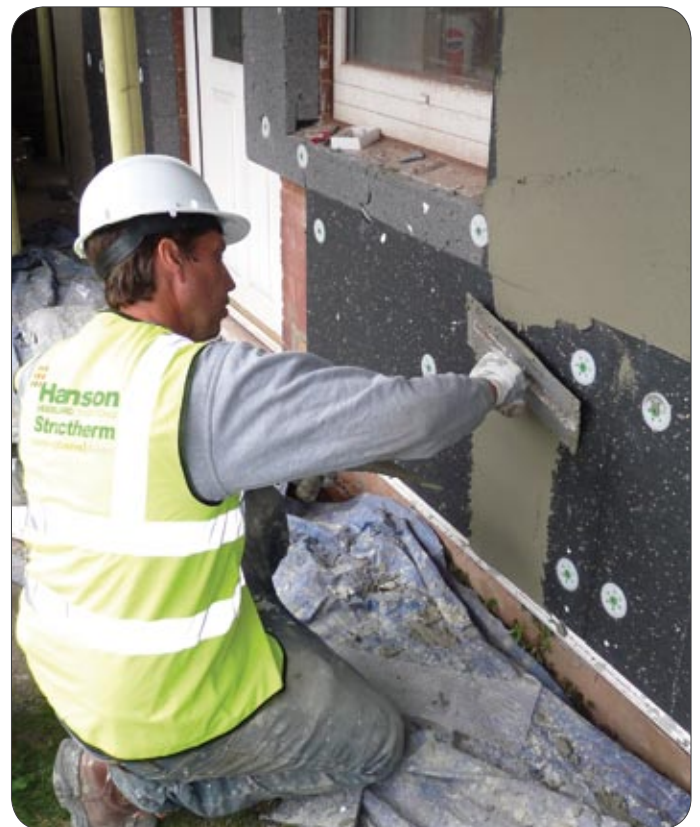
Hanson Structherm has many years of experience in providing a comprehensive, integrated service. From initial concept right through to completion, our aim is to develop a full understanding of your business and operational objectives in order to ensure the smooth and timely delivery of your project.

We offer all our clients the best in design services to cover all aspects of the project. Design work is carried out by our in-house qualified engineers and CAD designers and our free feasibility service allows us to present a totally integrated holistic solution.



Approved Installation Contractors

Fully trained Approved Installation Contractors (AIC's), operate nationally and are regularly assessed in the application of our products and systems which ensures that all projects are completed to the highest standards possible and allows us to maintain an extremely high level of quality on every job.



Our service includes:

- Feasibility study preparation, including cost analysis, works programme and NBS specifications (the recognised national standard specification system for the UK construction industry)
- U-value calculations to determine insulation type
- Site support to contractor, approved installer and client
- Street scene, artist impressions
- Product and colour samples

Quality Assurance

- BS EN ISO 9001:2008
- BBA certified
- Energy Saving Trust Recommended & Ofgem Registered
- 20 year standard warranty and product guarantee
- Minimum design life of 30 years
- Design covered by professional indemnity insurance
- INCA and NIA membership

For more details regarding our range of systems, please contact Hanson Structherm's technical department on **01484 850098**.

Hanson Structherm's product range includes:

- Structural External Wall Insulation
- Renders & Finishes
- Structherm Fastbrick
- Acrylic Brick Slips

Hanson Structherm works in the following sectors:

- Social Housing
- Private Housing
- Education
- Commercial

Structherm Ltd is part of the Hanson-HeidelbergCement Group

Structherm Ltd

Bent Ley Road
Meltham
Holmfirth
West Yorkshire HD9 4AP

t: 01484 850098

f: 01484 851388

e: info@structherm.co.uk

www.structherm.co.uk

BR007.1

